

MARIAN GOODMAN GALLERY

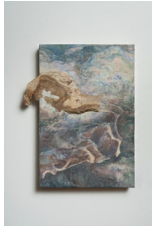
Anri Sala: Time No Longer

Marian Goodman Gallery Los Angeles | 7 September - 26 October, 2024

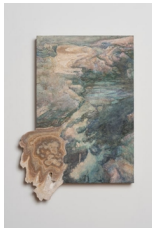
Seward Gallery



Noli Me Tangere Inversa (Fragment 2), 2024
Fresco painting, intonaco on aerolam, Tartaruga marble
19 1/4 x 31 1/8 x 1 5/8 in. (49 x 79 x 4 cm)
(28924)



Surface to Air XXVII (Tartaruga/34°48'4"N, 133°56'34"E), 2024
Fresco painting, intonaco on aerolam, Tartaruga marble
17 3/4 x 13 3/4 x 2 in. (45 x 35 x 5 cm)
(29122)



Surface to Air XXV (Tartaruga/34°48'4"N, 133°56'34"E), 2024
Fresco painting, intonaco on aerolam, Tartaruga marble
25 1/4 x 18 1/2 x 2 in. (64 x 47 x 5 cm)
(29023)



Surface to Air XVIII (Cipollino/5°15'21"S, 38°50'17"E), 2024
Fresco painting, intonaco on aerolam, Cipollino marble
47 5/8 x 97 5/8 x 2 3/8 in. (121 x 248 x 6 cm)
(28925)



Noli Me Tangere Inversa (Fragment 1i), 2024
Fresco painting, intonaco on aerolam, Tartaruga marble
25 5/8 x 21 7/8 x 1 5/8 in. (65 x 55.5 x 4 cm)
(28923)

Main Gallery



Time No Longer, 2021
Computer-generated imagery, multichannel sound, dynamic lights;
Duration: 13 minutes
Projection approx.: 177 1/8 x 250 in. (4500 x 635 cm)
Edition of 3 plus 2 artist's proofs (#3/3)
(24016)